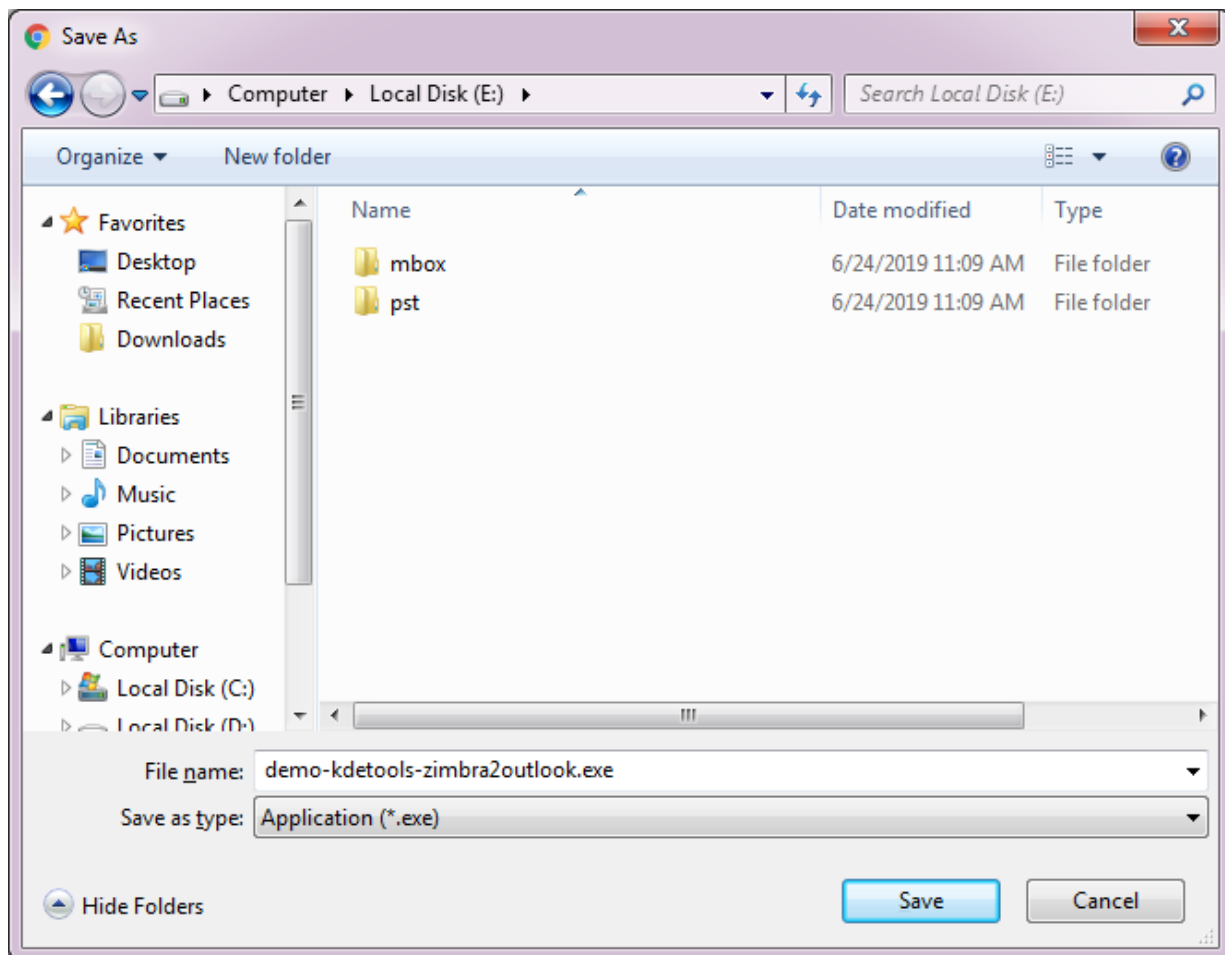


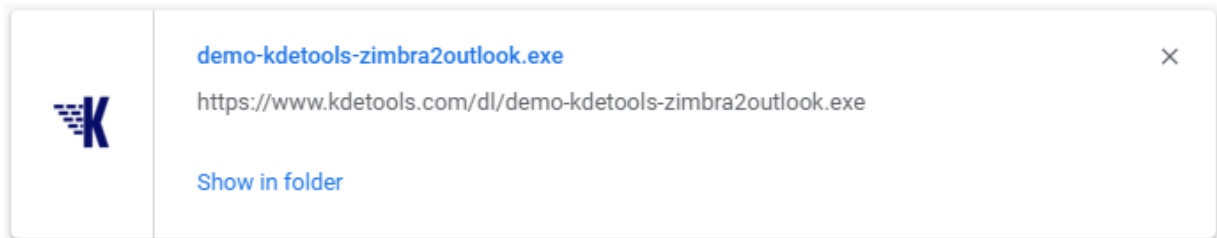
KDETools Zimbra Converter

Step to Install

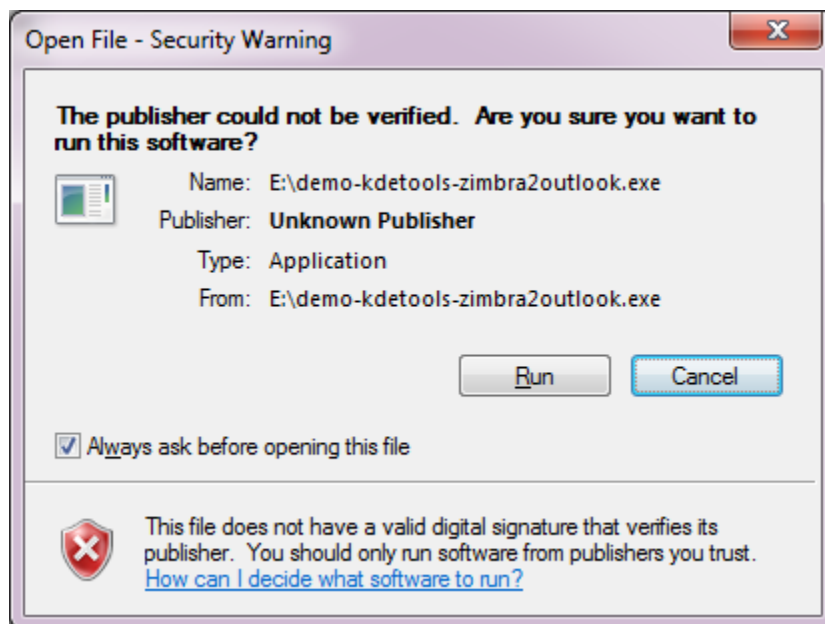
1. When Opening Dialog Box Appears Click **Save File**.



2. When Downloads Windows appears open a file in a **folder**.



4. When Security Warning Dialog Box Appears, **Click Run**.



System Requirements:

Support: Windows 10, 8.1, 8, 7 & all below Windows version

Processor: Intel® Pentium 1 GHz processor(x86, x64) or equivalent

RAM: 2GB of RAM is recommended

Hard Disk Space: Minimum 100 MB for installation is required